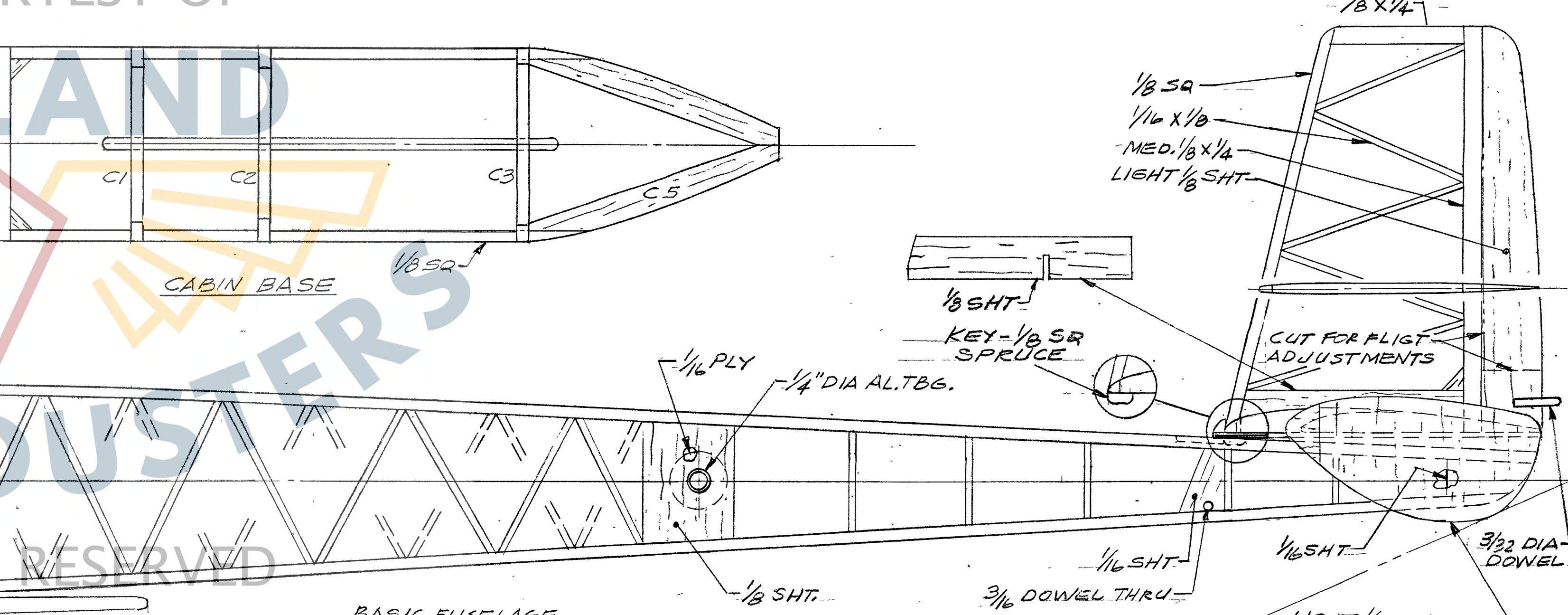
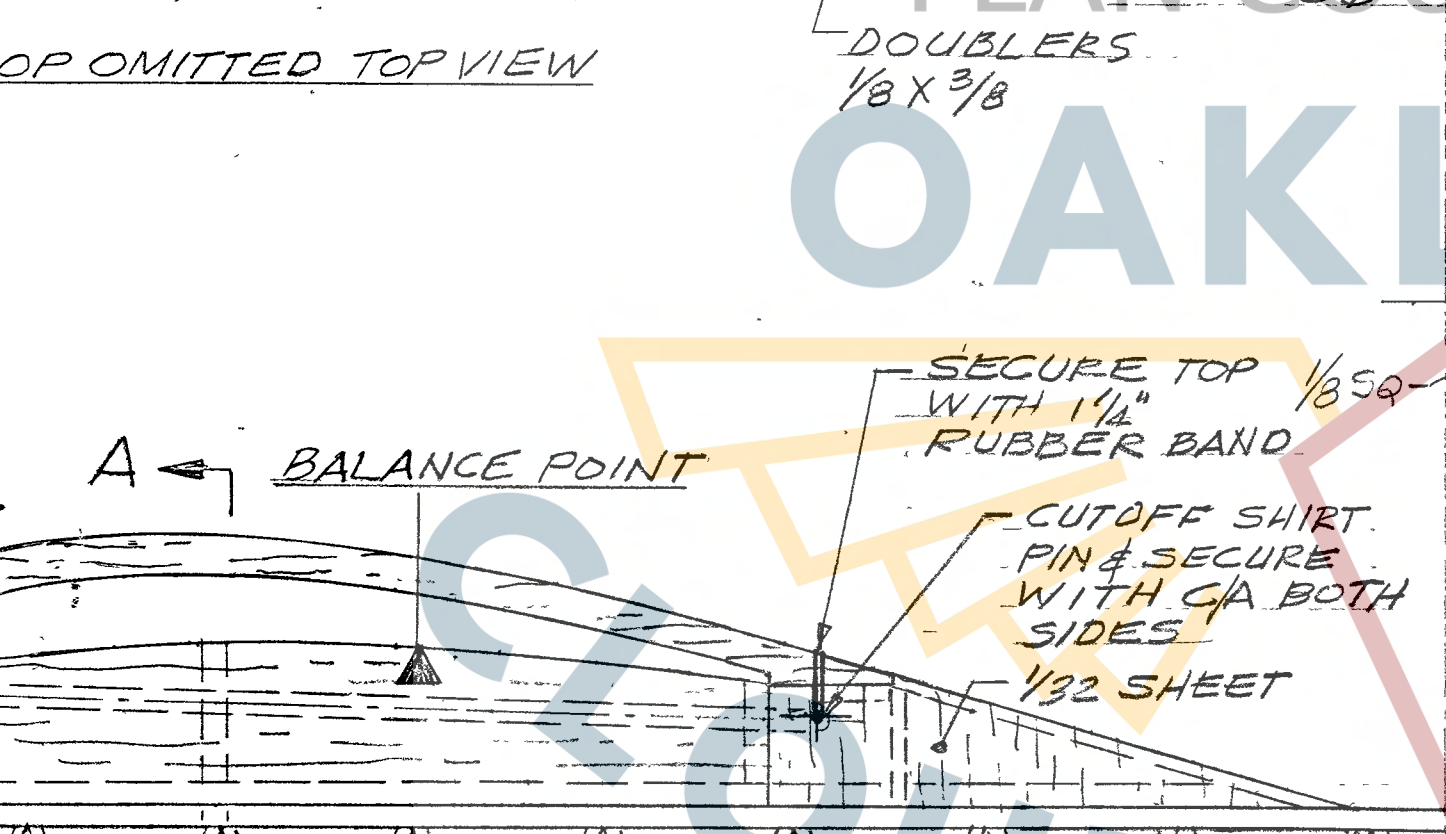
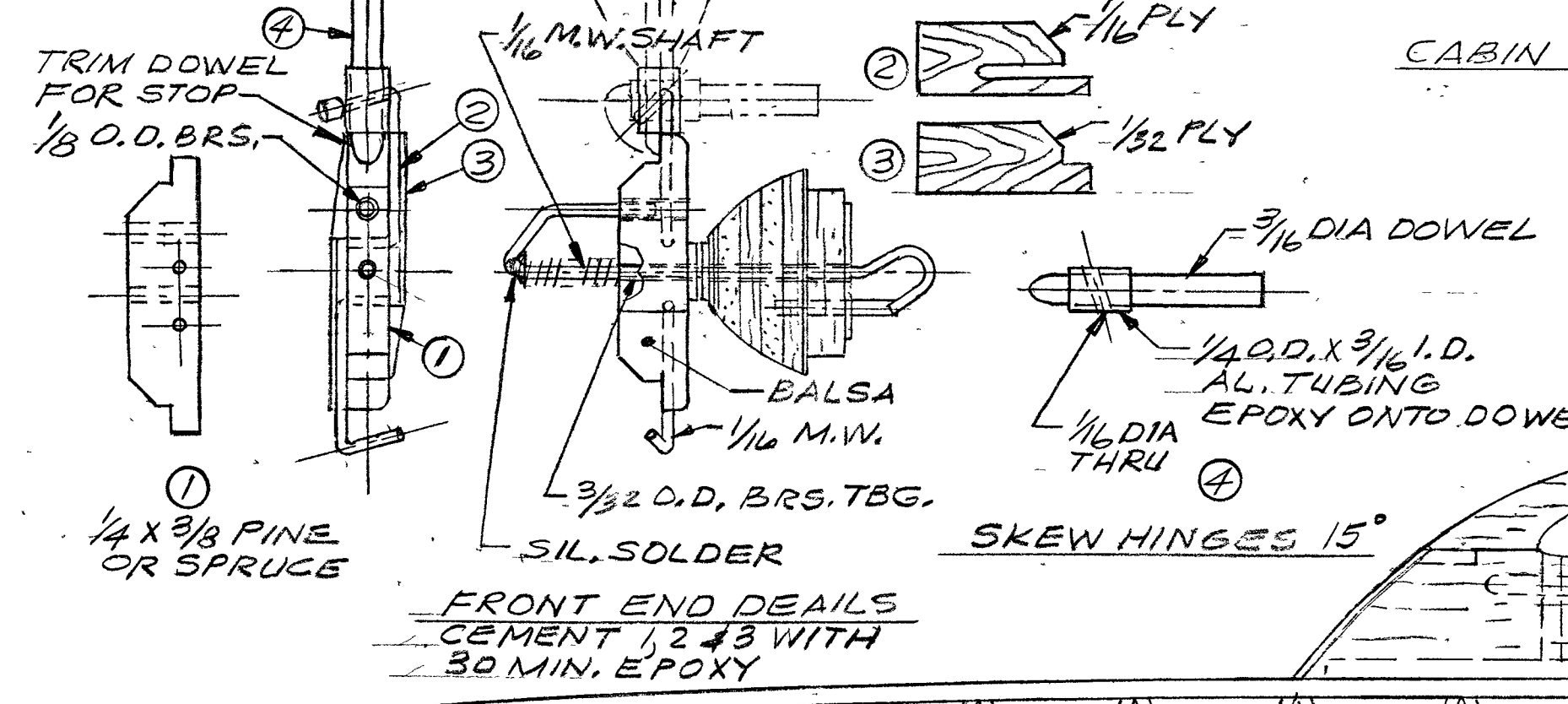
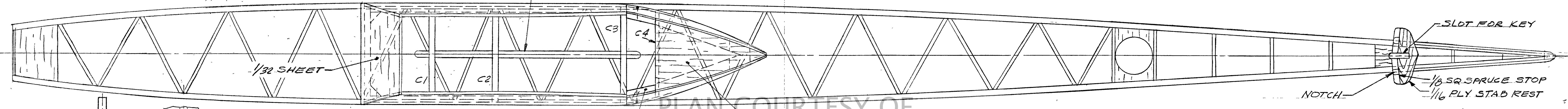


- PROP NOTES**
1. DRILL A 3/16" DIA HOLE IN END OF BLOCK.
 2. CARVE BLADE LEAVING EXTRA THICKNESS AROUND 3/16" HOLE.
 3. EPOXY ONTO DOWEL AND SET PITCH ANGLE.
 4. AFTER EPOXY IS CURED FINISH BLADE AROUND DOWELS



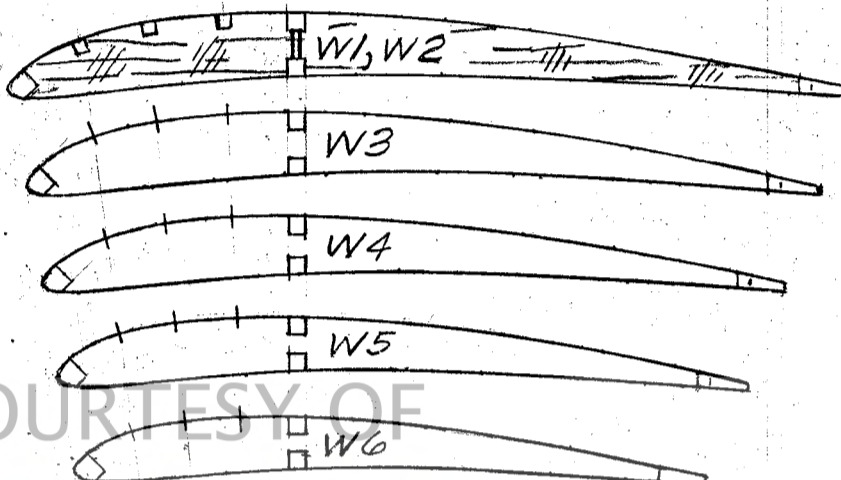
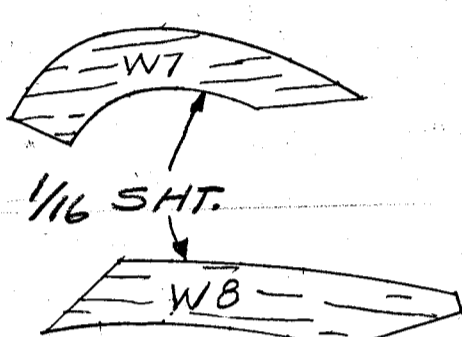
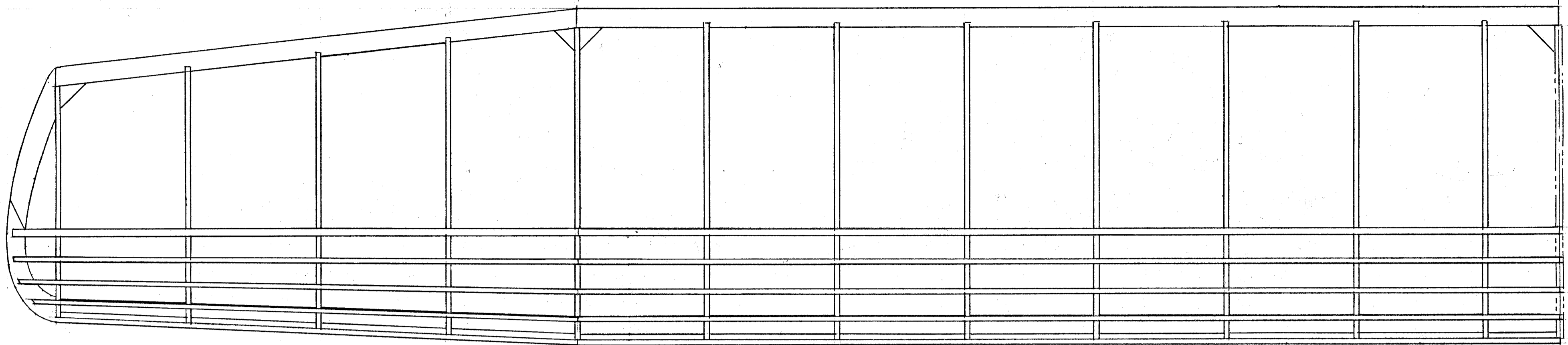
BASIC FUSELAGE CONSTRUCTION
 1/8 SQ MED. LONGERONS
 1/16 X 1/8 CROSSMEMBERS (MED. LIGHT)

TRIM SETTINGS
 RT. THRUST 3°
 DOWN THRUST 1°
 LEFT RUDDER TAB
 POWER 22 STR. 1/8
 TAN II

WEIGHTS
 FUSE 34.5 gm
 WING 16.3 gm
 PROP 20.1 gm
 TAIL 6.3 gm

WING AREA 154 IN² PROJECTED
 WING SPAN 38.93" PROJECTED
 STAB AREA 47.5 IN²
 WING A.R. 9.4:1
 FUSE CROSS SECT 8.8 IN²
 L²/20 = 8
 L = 34.6
 TOTAL WEIGHT 77.2 gm
 REQ'D WEIGHT 77 gm

MOPPETT # III
 ROGER GREGG
 UPDATED 9/12/15

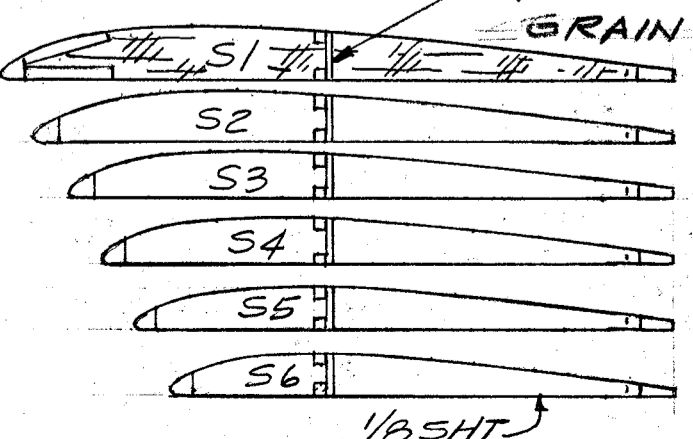
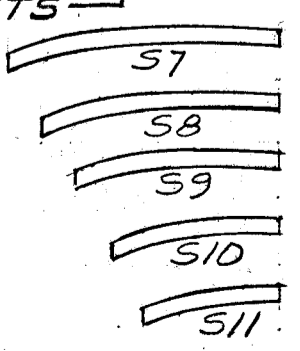
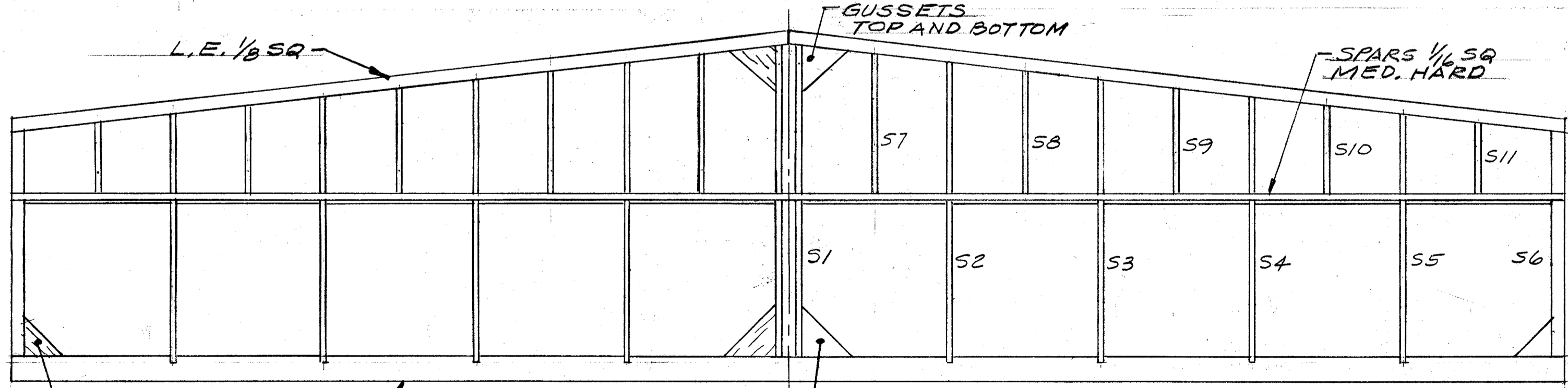
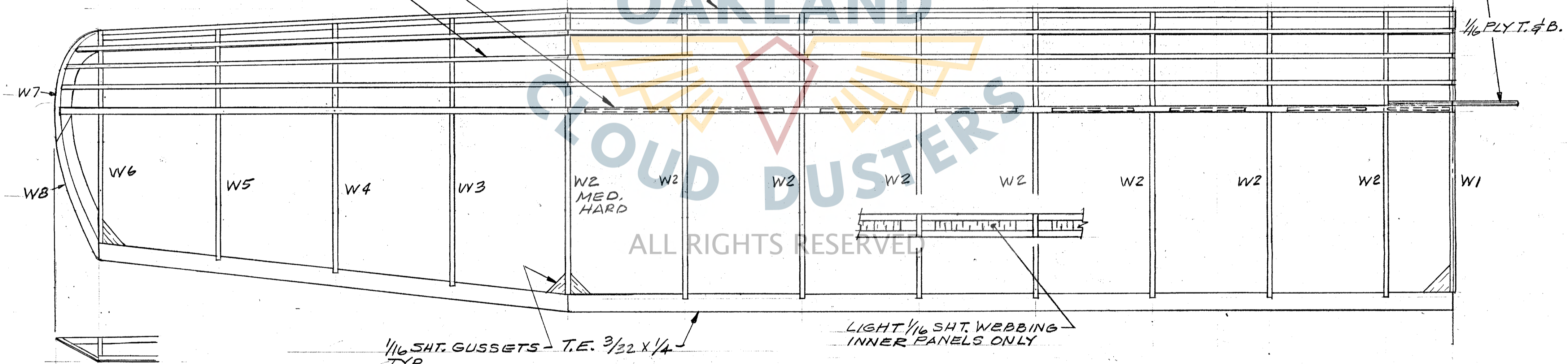


W1 IS 3/32 SHT

ALL RIBS 1/16 LIGHT
C-GRAIN EXCEPT
AS NOTED.

3/32 SQ MAIN SPARS
1/16 SQ AUX. SPARS

L.E. 1/8 SQ



WEB - 1/32 LIGHT
GRAIN VERT.

ALL RIBS LIGHT
C-GRAIN
ALL RIBS 1/20 SHT.
EXCEPT AS
NOTED

1/16 SHT
GUSSETS

